

Villa Donna

apartmaji pod Donačko goro

- Villa Donna is located at a quiet and sunny location at the foothills of a mountain Donačka Gora, 3 km from the centre of Rogatec and 5 km from Rogaška Slatina in **Slovenia**. Excellent location of the facilities offers contact with nature and with this pleasant and satisfied stay, especially for lovers of cultural heritage, nature, local food and selected wines.
- Hiking to Donačka gora, fishing in the pond Žabjek, for horse lovers a visit to the Equestrian centre in Rogatec and horse-riding to the primeval forest on Donačka gora, presentation of the basics of skydiving, walking through the outdoor museum in Rogatec, where you can try your hand in active workshops of cottage industry, a medieval feast in the mansion Strmol, visiting the Rogaška Slatina spa, which offers relaxation and entertainment for several centuries, visiting Paviljon Kaktej, where you can see 1600 different species of cacti, bathing in thermal pools in Rogaška Slatina, tastings Rogaška's culinary delights and selected wines - all this and much more can you experience on your stay under Donačka Gora.



Description of the object

Villa Dona was built in 2008. The building has three floors. On the first floor are offices, garages and other space for business purposes. On the second and third floors there are 9 apartments. All apartments are equipped with furniture, have a private bathroom, air conditioning and gas heating.

There is a lot of parking lots in front of the building. The building is registered in the land register.



Villa Dona

Apartmenti pod Donačko goro

Size of rooms and land

Plot Number: 591/4, 591/1 – Donačka gora_1175

1 st floor : Garages 1 118,77 m2
 Offices and space
 for bussines purposes 2 206,95 m2

2 nd floor: Apartment 3 28,44 m2
 Apartment 4 32,65 m2
 Apartment 5 28,17 m2
 Apartment 6 90,20 m2
 Apartment 7 51,82 m2

3 rd floor: Apartment 8 34,94 m2
 Apartment 9 50,15 m2
 Apartment 10 50,50 m2
 Apartment 11 50,74 m2

 Hallway 12 46,17 m2

TOTAL : **789,50 m2**

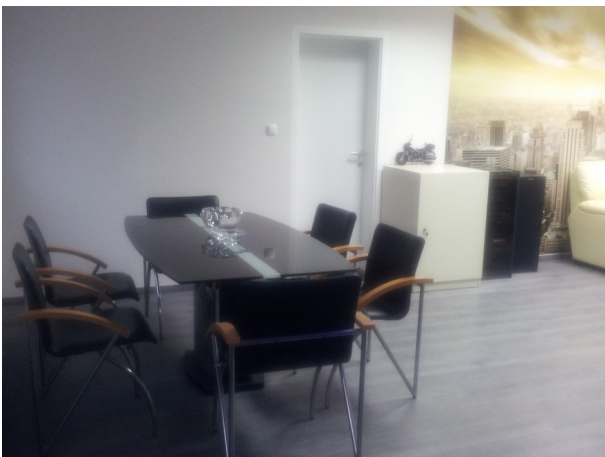
Land – parking : 1.049,00 m2

PRICE : **EUR**

It's possible to buy a neighboring building from another owner in the size of 360 m2 and the land 1200 m2. Both of these facilities are suitable for rearranging into Motel or Hotel, for which a preliminary design has already been made.



Photos 1st floor



Photos 2nd floor





Photos 3rd floor





Location

<https://www.google.com/maps/place/Dona%C4%8Dka+Gora+4b,+3252+Rogatec/@46.2453587,15.7194796,17z/data=!3m1!4b1!4m5!3m4!1s0x47658e8b6a2c3f8b:0xa1b402bd9cb24ae!8m2!3d46.2453587!4d15.7216683>

SE Slovenia-OBSOTELJE

From Celje in the direction of Rogaška Slatina - 35km
From Rogaška Slatina in the direction of Rogatec - 5km
From Rogatec in the direction Ptuj- Žetale - 3km

Address: VILLA DONA
Donačka gora 4B
3252 Rogatec

Due to the location of the Villa Dona Apartments under Donačka Gora in a tourist environment and due to the proximity of the well-known **Slovene health resort Rogaška Slatina**, the facility is very suitable for tourist activities.



Interesting in the surrounding area

Cultural Heritage

- Srednjeveški trg Rogatec

<http://www.rogatec.net/rogatec.asp?stran=1&p1=2&p2=2&p3=1&p4=1>

-Dvorec Strmol <http://www.rogatec.net/rogatec.asp?stran=8&p1=1&p2=1>

-Grad Rogatec <http://www.rogatec.net/rogatec.asp?stran=1&p1=2&p2=2&p3=1&p4=3>

-Muzej na prostem Rogatec <http://www.muzej-rogatec.si/>

-Zdraviliško jedro v Rogaški Slatini <http://www.ra-sotla.si/turizem/index.php/zdraviliko-jedro-v-rogaki-slatini>

-Kalvarija- Sveti Rok –Šmarje pri Jelšah <http://www.smarje-pri-jelzah.si/kalvarija/>

-Minoritski samostan in lekarna Olimje www.ra-sotla.si/turizem/index.php/minoritski-samostan-olimje - 18k -

-Grad Podčetrtek http://podcetrtek.si/index.php?sl_grad

-Grad Podsreda

<http://www.burger.si/Kozjansko/GradPodsreda.html>



Natural and other interests

- Donačka gora – bukov pragozd

<http://www.rogatec.net/rogatec.asp?stran=1&p1=2&p2=3&p3=1>

- Izvir reke Sotle <http://www.rogatec.net/rogatec.asp?stran=1&p1=2&p2=3&p3=4>

<http://www.rogatec.net/rogatec.asp?stran=1&p1=2&p2=3&p3=4>

- Gozdni rezervat Log ob Sotli

<http://www.rogatec.net/rogatec.asp?stran=1&p1=2&p2=3&p3=3>

- Krajevski park Boč <http://boc.si/>

- Kozjanski park <http://www.kozjanski-park.si/>

-Paviljon Kaktej Rogaška Slatina

<http://paviljonkaktej.blog.siol.net/>

-Čokoladnica v Olimju

http://www.syncerus.si/obisk_v_cokoladnici_olimje.htm

-Dežela pravljic in domišljije Koča pri čarovnici

<http://www.carovnica.com/>



Active holidays

- pohodništvo Planinska pot na Donačko goro



- kolesarjenje Kolesarske poti – povezave:
<http://www.rogatec.net/rogatec.asp?stran=1&p1=7>

http://www.kk-rogaska.si/kolesarske_poti.htm

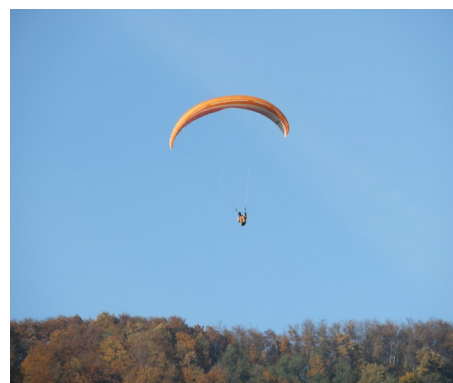


- jahanje Konjeniški center Rogatec <http://www.kk-strmol.com/>

- jadralno padalstvo na Donački gori Jadralno društvo Žetale

- ribolov- Ribnik Žabjek pri Rogatcu Ribiška družina Rogatec

- lov Lovska družina Rogatec



- kopanje v Rogaški rivieri <http://www.termes-rogaska.si/riviera.asp>

-kopanje v Termah Olimia
<http://www.termes-olimia.com/si/therme/termalija/pools/>

-igranje golfa - A Golf Olimje <http://www.agolf.si/>

